



Marshall University  
Joan C. Edwards School of Medicine  
Organizational Chart  
9/7/2016

**Dean  
School of Medicine**

**Department  
Chairs**

**Development &  
Alumni Affairs**

**Diversity**

**Public Affairs /  
Communications**

**Education**

**Clinical Affairs**

**Research**

**Business Development**

**Government Relations,  
Health Care Policy &  
External Affairs**

**Larry Dial, MD  
Vice Dean**

**Ali Oliashirazi, MD  
Vice Dean**

**James Becker, MD  
Vice Dean/Chief Safety Officer**

**Undergraduate  
Medical Education**

**Bobby Miller, MD  
Vice Dean**

Academic Affairs  
Admissions  
Curriculum  
Student Affairs  
Wellness

**Biomedical Sciences  
Education**

**Uma Sundaram, MD  
Vice Dean**

PhD  
MS-Research  
MS-Medical Sciences  
MD/PhD Program

**Graduate Medical  
Education**

**Paulette Wehner, MD  
Vice Dean**

GMEC  
Residencies  
Fellowships  
CME

**Clinical & Translational  
Sciences**

**Uma Sundaram, MD  
Vice Dean**

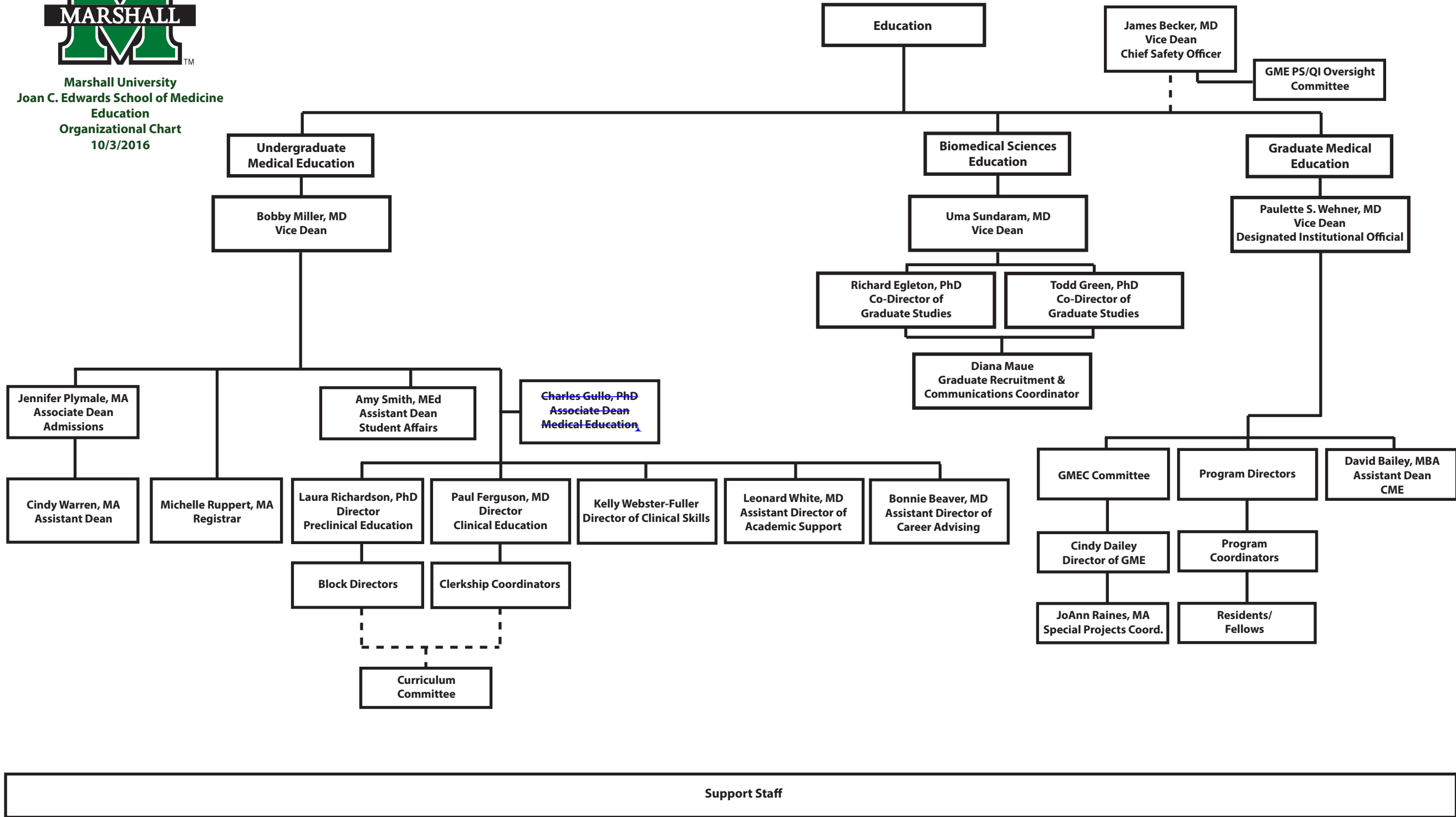
**Basic Sciences**

**Gary Rankin, PhD  
Vice Dean**

**Support Staff**

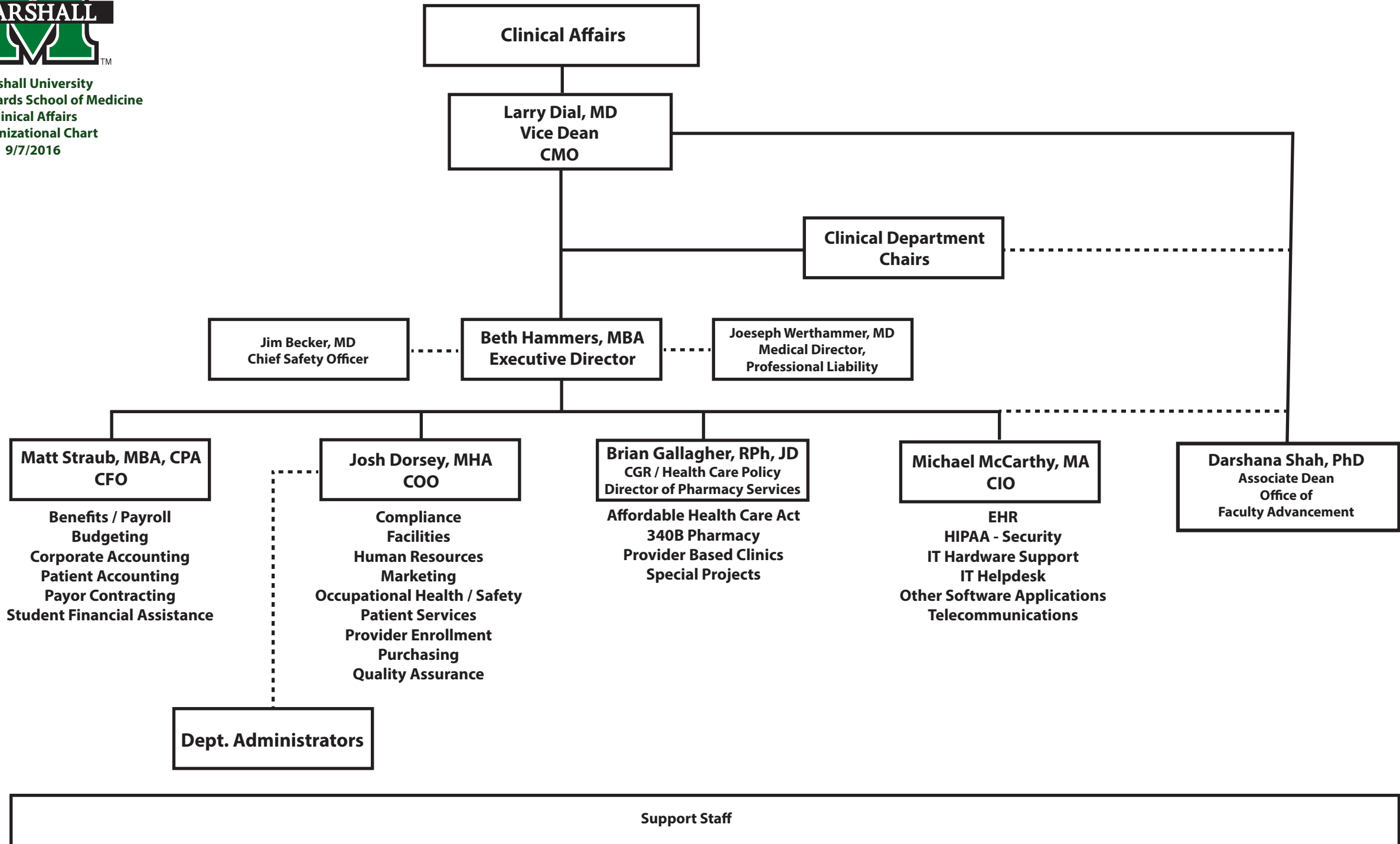


Marshall University  
 Joan C. Edwards School of Medicine  
 Education  
 Organizational Chart  
 10/3/2016



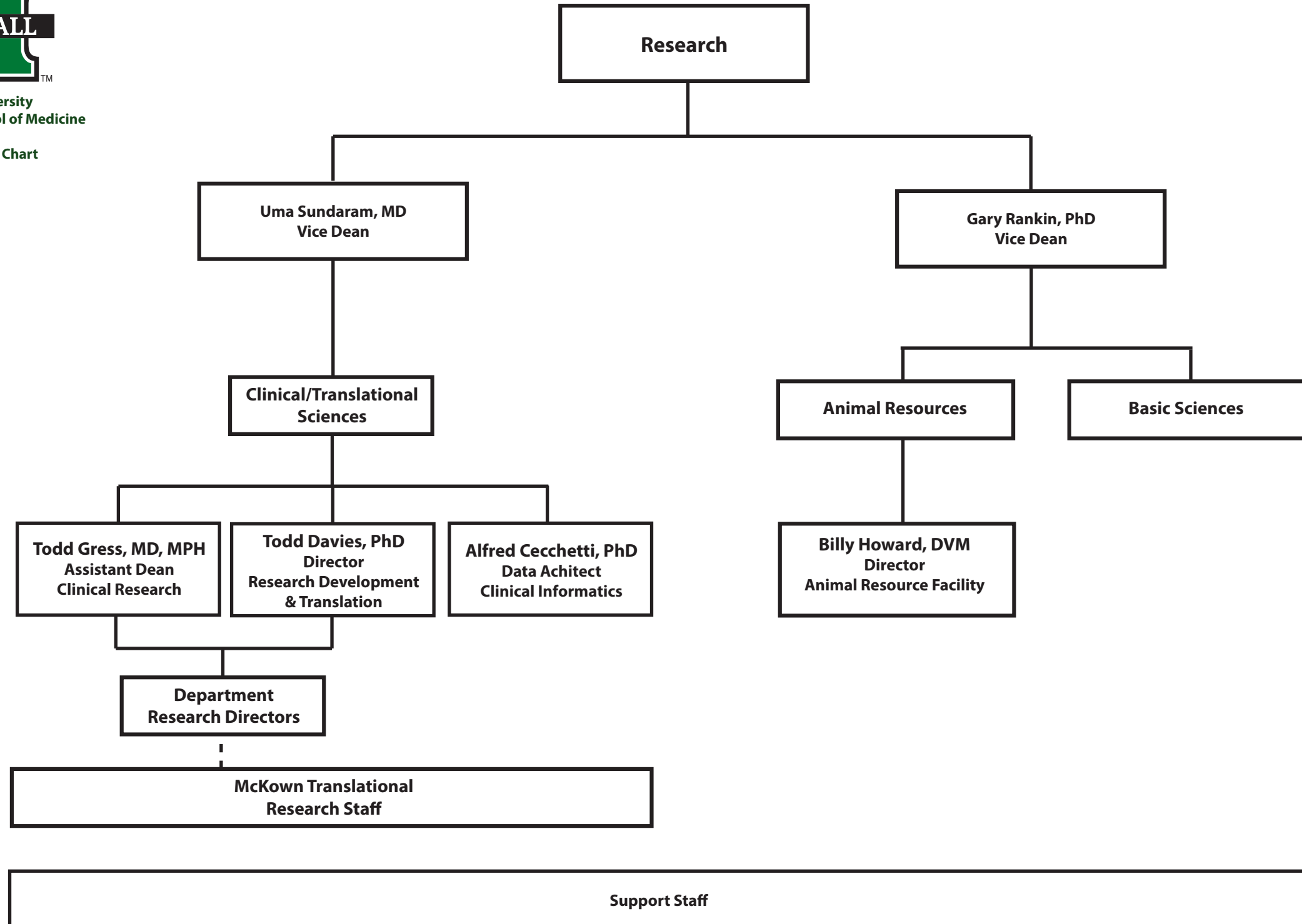


Marshall University  
 Joan C. Edwards School of Medicine  
 Clinical Affairs  
 Organizational Chart  
 9/7/2016





Marshall University  
Joan C. Edwards School of Medicine  
Research  
Organizational Chart  
9/7/2016





Marshall University  
Joan C. Edwards School of Medicine  
Government Relations,  
Health Care Policy &  
External Affairs  
Organizational Chart  
9/7/2016

