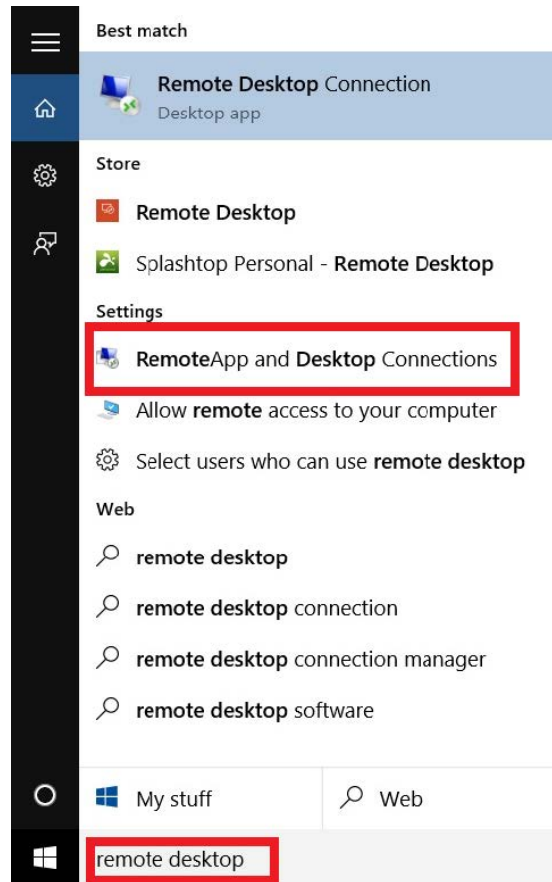


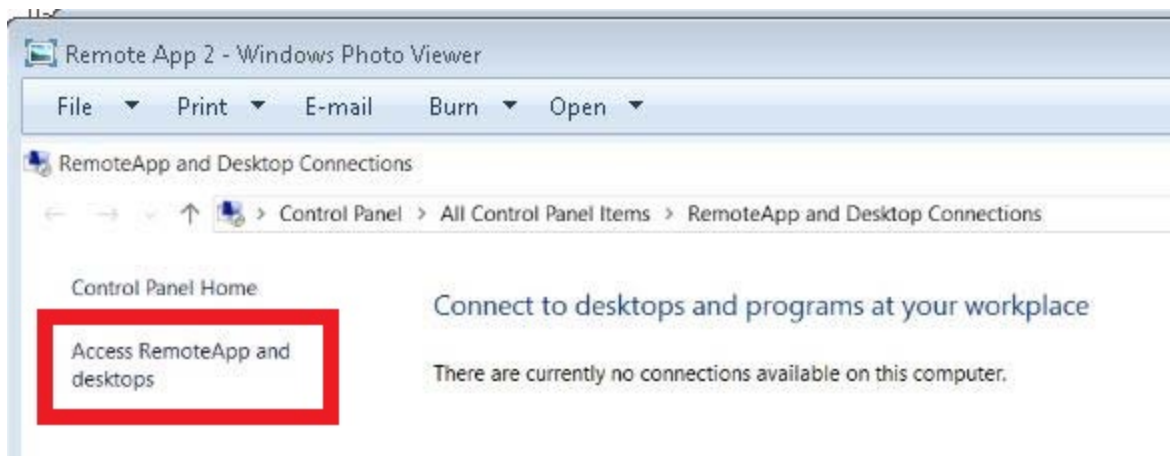
MUSOM Remote App Services Windows 10 Configuration

Revised 11/12/2015

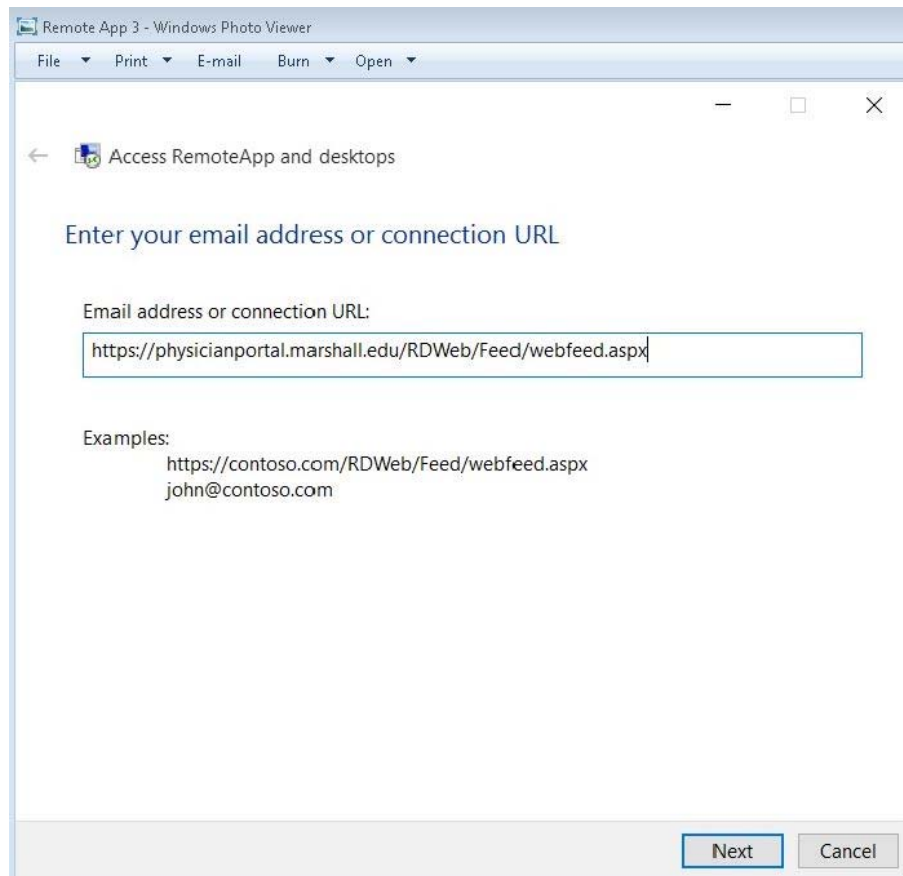
1. In the “Search” box to the right of your Windows “Start” icon, type **remote desktop**. In the results that display, click on “**RemoteApp and Desktop Connections**”.



2. Then click on “**Access RemoteApp and desktops**”



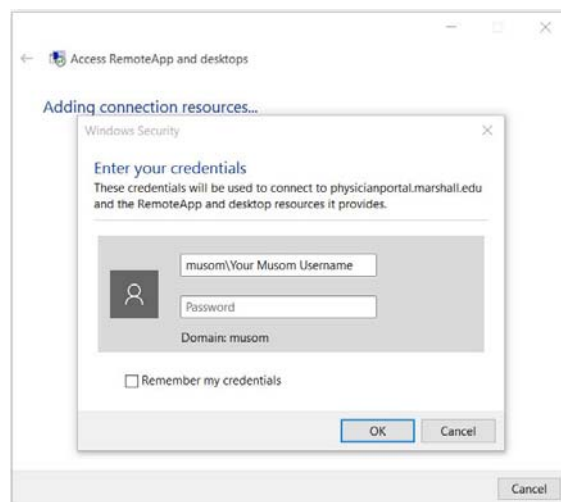
3. Then enter this URL: <https://physicianportal.marshall.edu/RDWeb/Feed/webfeed.aspx>



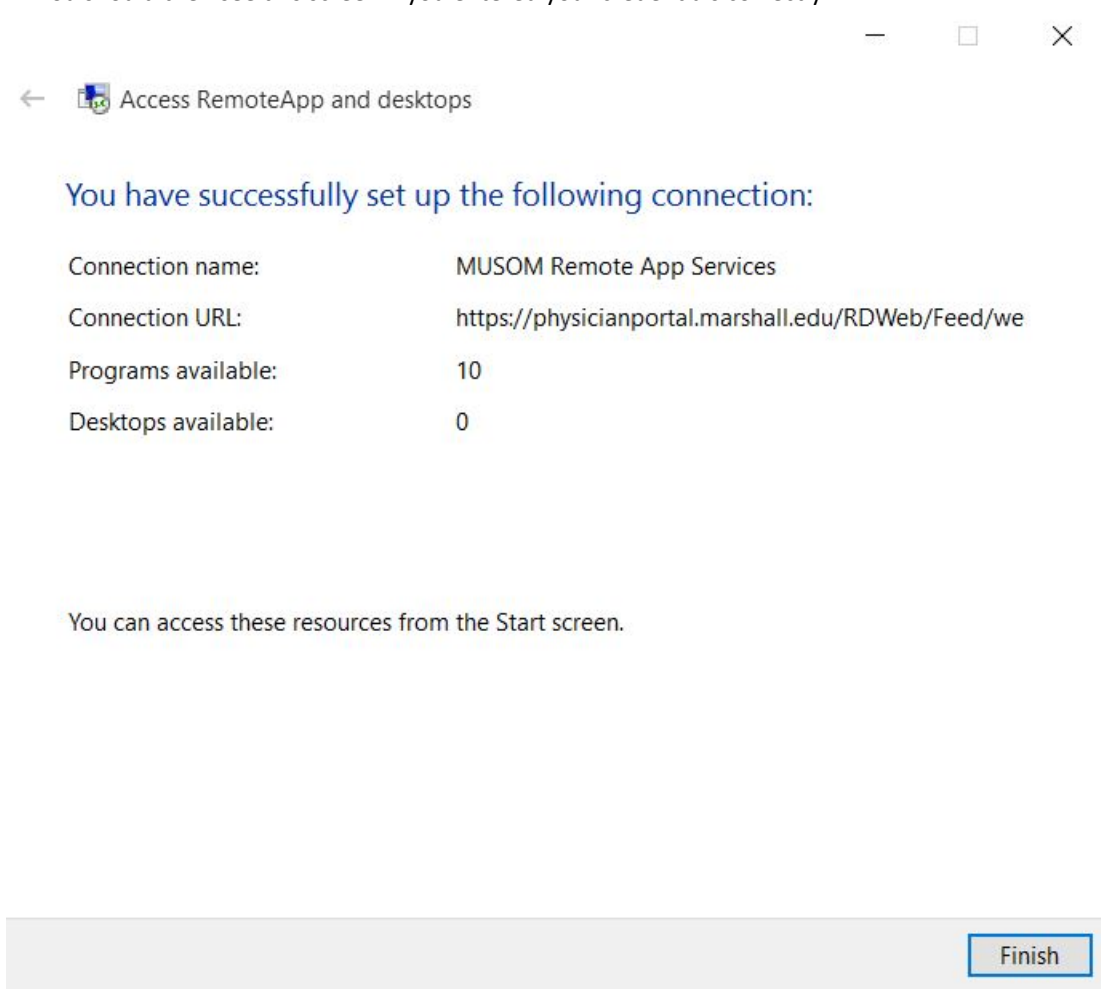
4. Enter your credentials in this format:

If you have a **MUSOM** account, type your username as: **musom\Your MUSOM username**
type your password as: **Your MUSOM password**

If you have a **MARSHALL** account, type your username as : **marshall\Your MARSHALL username**
type your password as: **Your MARSHALL password**



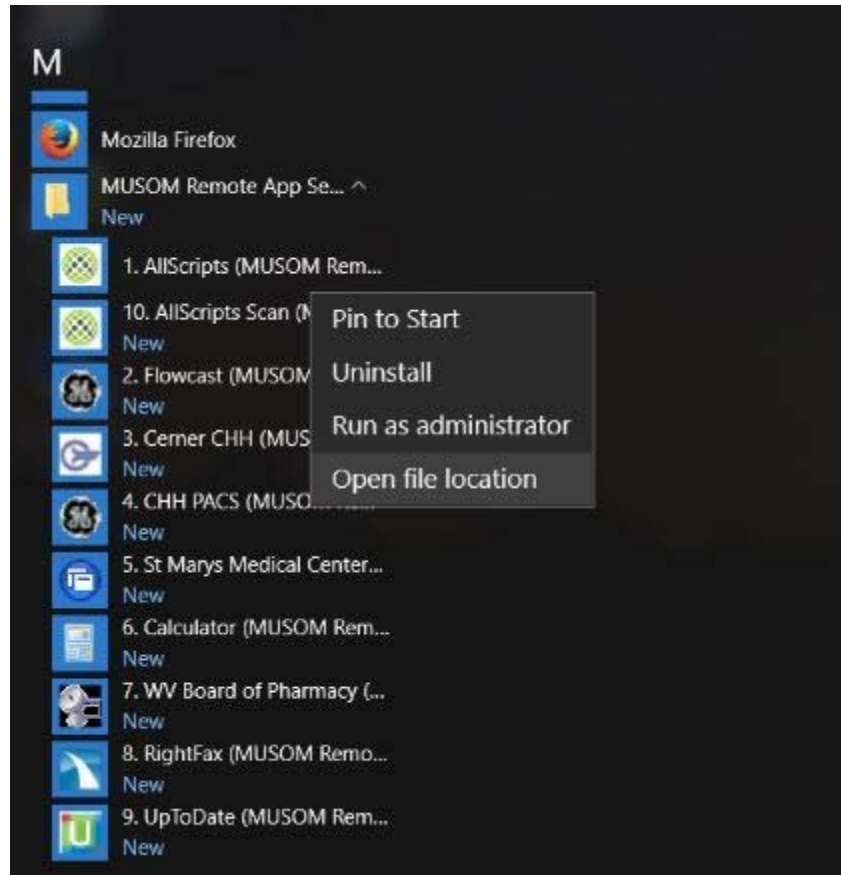
5. You should then see this screen if you entered your credentials correctly.



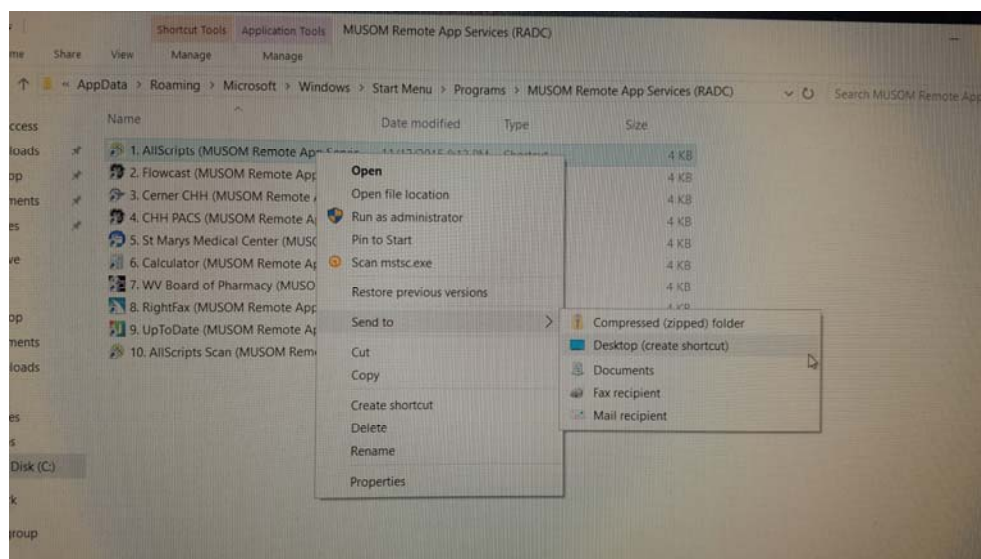
6. Then click "Finish"
7. Click on your Windows "Start" button in the bottom left hand corner and locate the "MUSOM Remote App" folder. It will display the list of applications that are now setup.



8. To create desktop shortcut for these applications, right click on one of these applications, then choose **“Open file location”**



9. Then right click on each of the applications you want to create a shortcut for, then go to **“Send to”** and then select **“Desktop (create shortcut)”**



10. Then you can just click the desktop shortcut to open it like any other application.